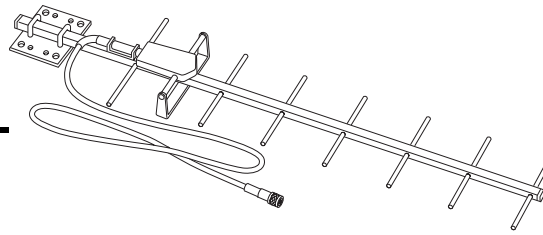


# Yagi Antenna

7660

Weather Accessories



The Long-Range Yagi Antenna is installed in conjunction with the Long-Range Wireless Repeater to retransmit data over greater distances than a wireless repeater with a dipole antenna. The Long-Range Wireless Repeater requires two antennas, one for acquiring weather station data and the other for re-transmitting the data. The Yagi Antenna can be paired with another Yagi Antenna or an Omni Antenna (#7656) depending on your installation needs.

The Yagi Antenna is a standard 11 dBi directional antenna that comes equipped with an integrated Reverse Polarity TNC Male Connector which connects to the Long-Range Wireless Repeater connector.

Note: Overseas customers are responsible for procuring their own long-range antennas for use with the long-range wireless repeater that comply with local regulations. The antenna must have a TNC Male Connector to comply with the long-range wireless repeater connectors.

## Specifications

Operating Temperature . . . . . -40° to +150°F (-45° to +70°C)  
Non-operating Temperature . . . . . -40° to +150°F (-45° to +70°C)  
Dimensions (Listed by length: Diameter = 6.0" (152 mm) . 19.70" (500 mm)  
Weight . . . . . 1.9 lbs. (.70 kg)  
Transmit/Receive Frequency . . . . . 902-928 MHz  
Gain . . . . . 11 dBi  
Input Return Loss . . . . . -14 dB  
Beam width . . . . . ±25 degrees  
Connector Cable Length . . . . . 48"

## Package Dimensions

Product #	Package Dimensions (Length x Width x Height)	Package Weight	UPC Codes
7660	37.50" x 8.00" x 2.50" (953 mm X 204 mm x 64 mm)	3.9 lbs. (1.77 kg)	011698 00831 5